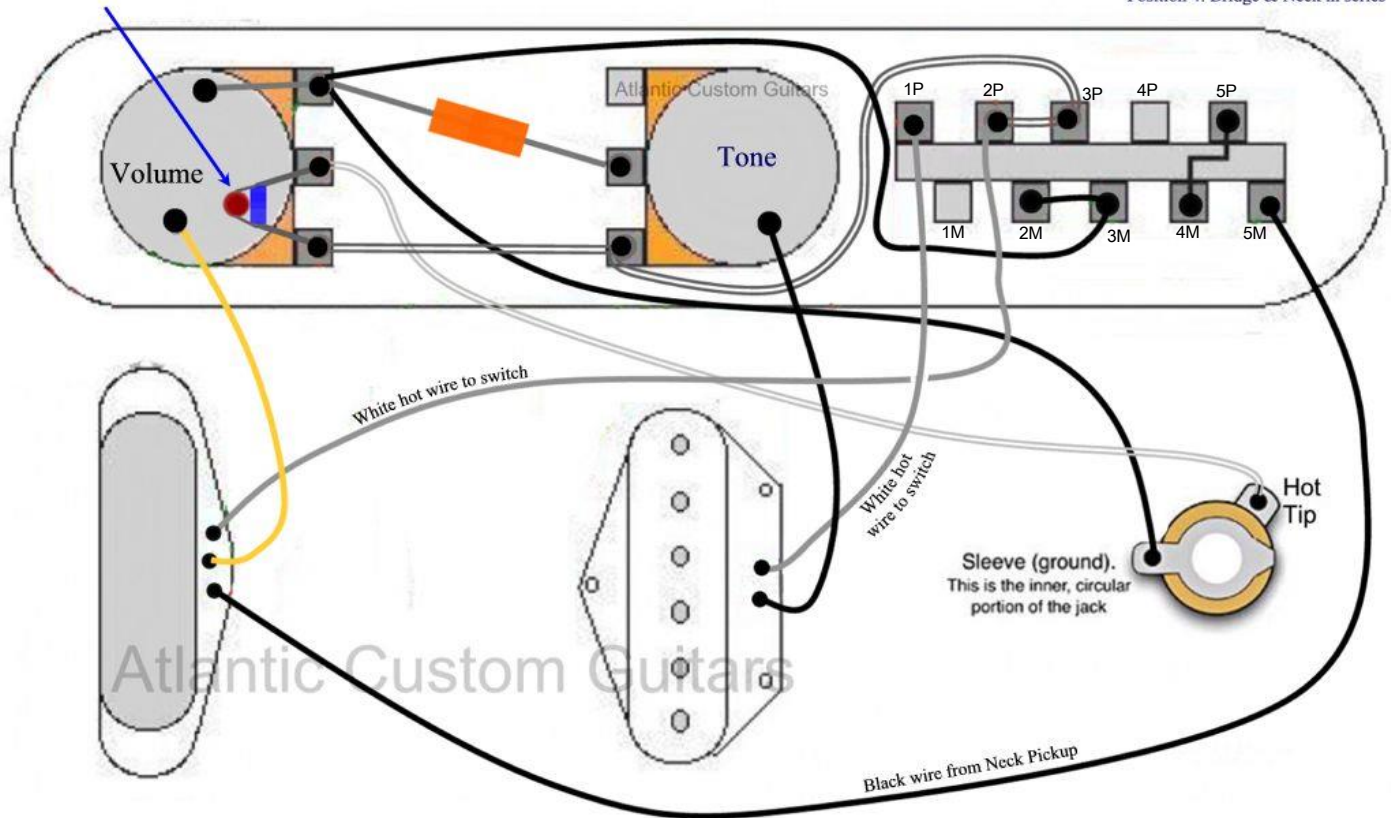


Telecaster 4-Way Reverse Wiring Diagram

Before installing, please check that the Treble Bleed mod is not touching the back of the volume Pot

Position 1: Bridge
Position 2: Bridge & Neck in parallel
Position 3: Neck
Position 4: Bridge & Neck in series



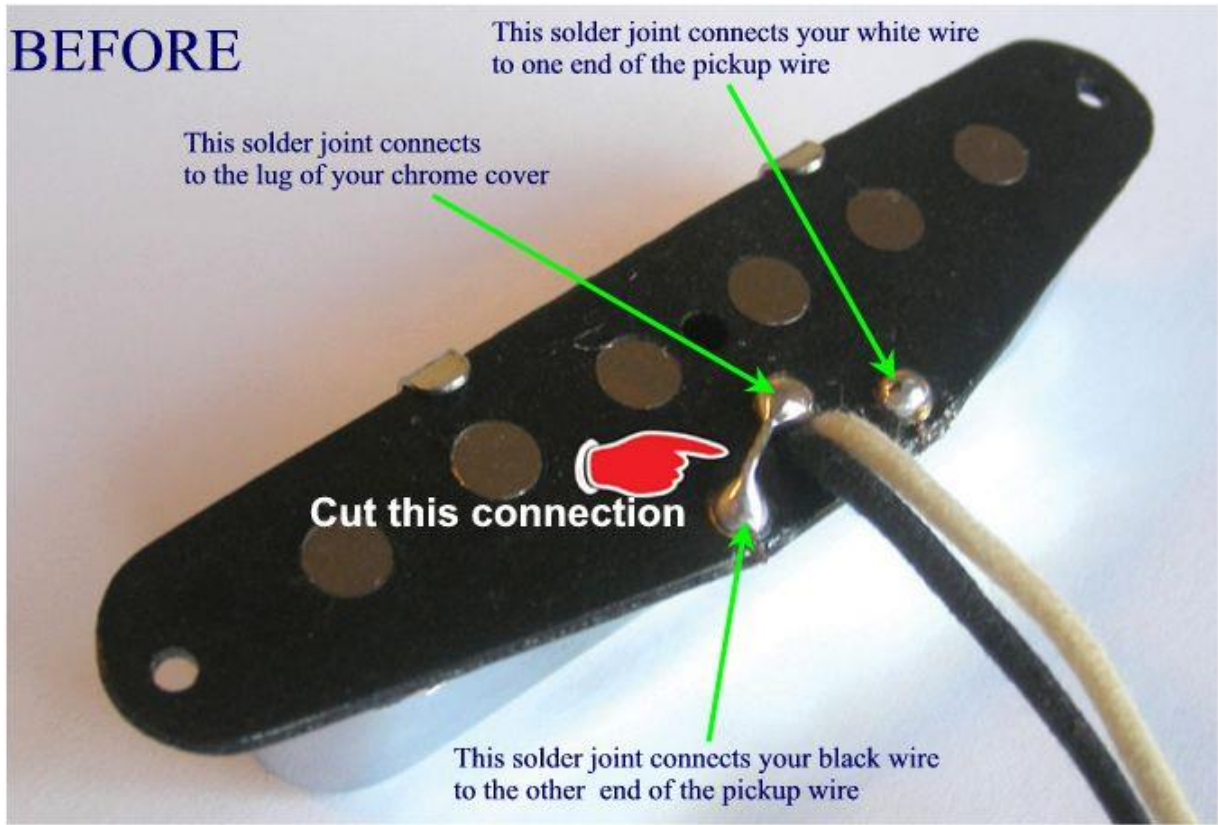
If your Neck Pickup has a metal cover, you will need to do this mod below

Normally on a Tele neck pickup, the black wire from the **NECK** pickup goes to ground. However in this harness the black wire goes to the switch. If you have a Chrome (metal) cover on your neck pickup, the black wire does two things. It completes the pickup circuit when it goes to ground and it also grounds the chrome cover. It does this by using a jumper underneath the pickup.

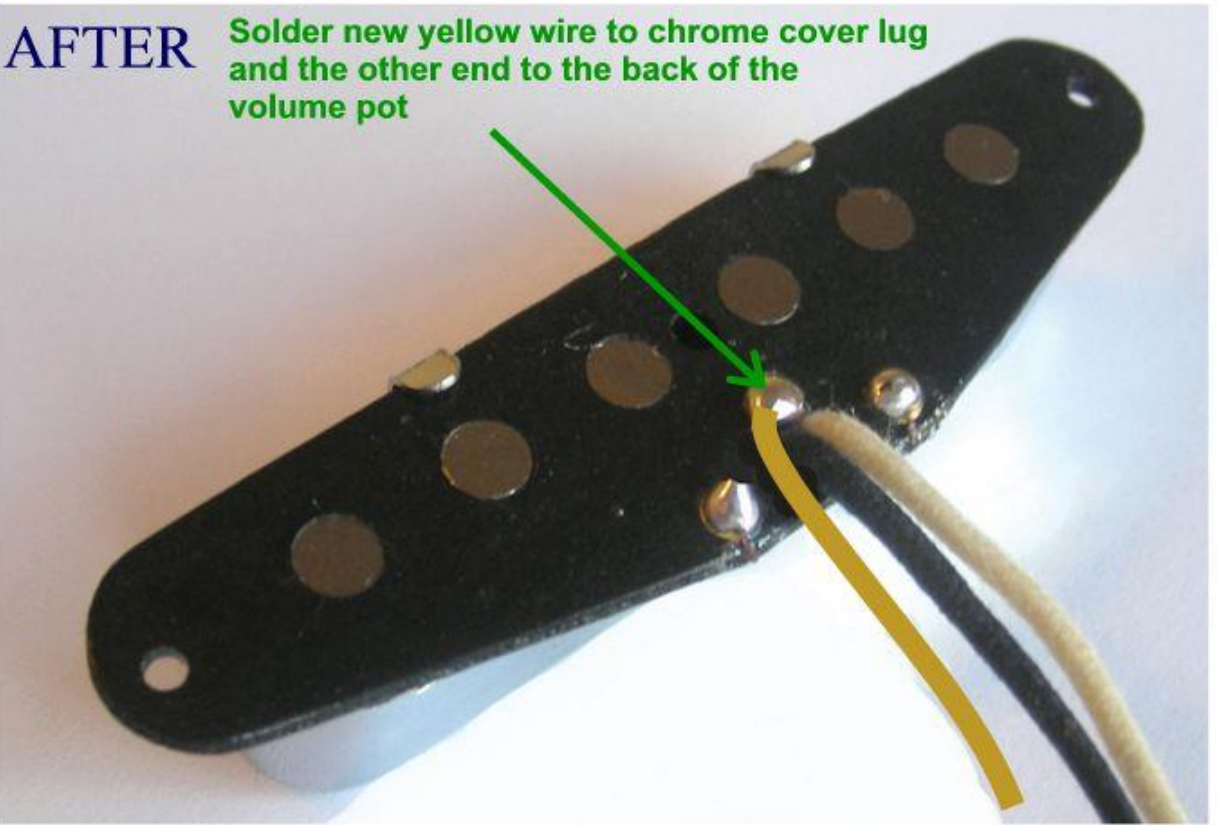
You will need to separate the metal cover from the pickup. You do this by disconnecting the jumper and soldering a new wire to the chrome/metal cover lug and running the other end to the back of the volume pot. Please see the diagrams below.

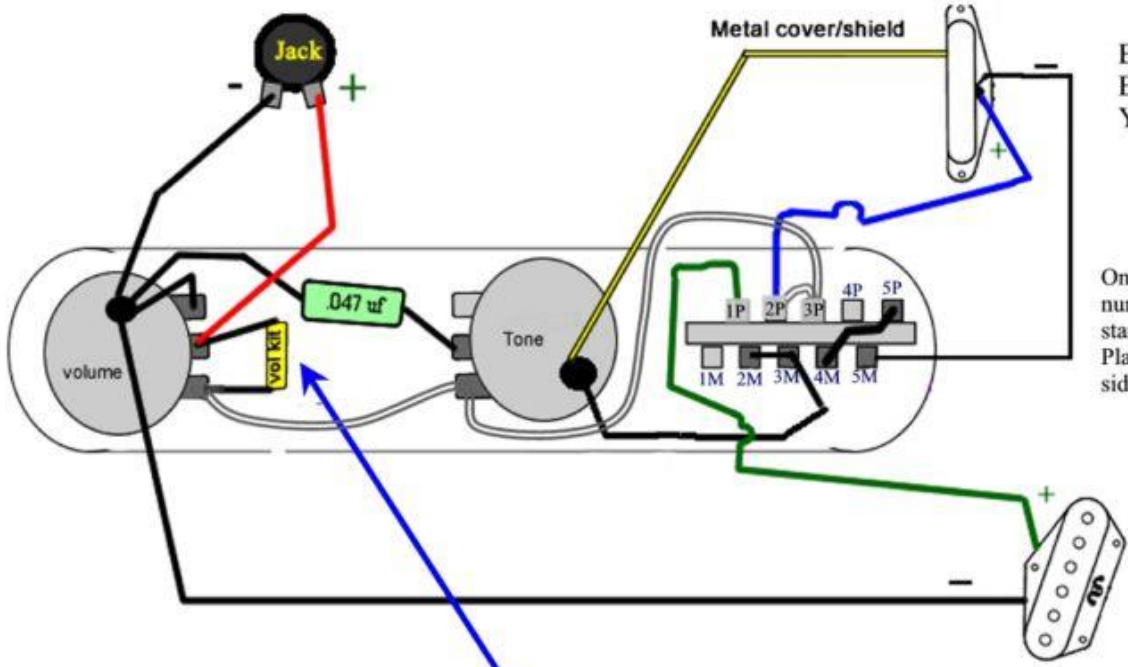
Please contact me if you are not sure how to proceed.

BEFORE



AFTER





Neck Pickup wiring

Blue (Hot) to lug 2P
 Black (Negative) to lug 5M
 Yellow - ground to Pot

The blue wire will normally be white in your guitar

On the switch you will see that I have numbered the lugs from 1 to 5. the M stands for Metal and the P stands for Plastic which corresponds to the metal side and the plastic side of the switch.

Bridge Pickup wiring

Green (Hot) to lug 1P
 Black ground to Pot

The green wire will normally be white in your guitar

4-Way Reverse Tele Wiring Diagram

- Position 1: Bridge
- Position 2: Bridge/Neck in parallel
- Position 3: Neck
- Position 4: Bridge/Neck in series

Before installing, please check that the capacitor and resistor for the treble bleed mod are not touching the back of the volume pot